



# Multicultural festival in Ichinoseki

Sunday, October 30<sup>th</sup>, 10am ~ 3pm

On the third floor of Nanohana Plaza in central Ichinoseki (Ohmachi 4-29)

## Things to try (10am~1pm)

- ◇ Learn about the finer points of separating garbage
- ◇ Take a Japanese lesson
- ◇ Put on a kimono
- ◇ Learn about traditional Japanese games



## On display (10am~3pm)

- ◇ Introduction of international relations associations
- ◇ International Linear Collider (ILC) illustration panels
- ◇ Exhibition of photos taken by international residents of Ichinoseki

**12~1pm**  
**Try pounding mochi,**  
**and then eat it!**

## Donations of backpacks and hats (10am~3pm)

PAIJ – a group formed by Filipino residents in Ichinoseki - are collecting donations of used school backpacks and hats to send to the Philippines.  
Please bring any backpacks or yellow hats you no longer need.



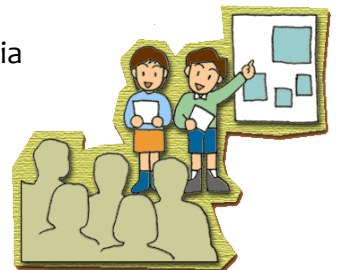
## Consultation in Chinese and Tagalog (10am~3pm)

A space will be set up for people to discuss any concerns in Chinese and Tagalog. Reservations are not necessary and questions can be asked on behalf of a family member or friend etc.

## Report on trip to Australia (1~1.20pm)

### **‘What we learned in the Central Highlands’**

Seven junior high school students who went to Ichinoseki's sister city in Australia (the Central Highlands in Queensland) in July this year will make presentations about their experiences. There will also be items on display introducing the Central Highlands.



## ILC Caravan comes to Ichinoseki (1.30~3pm)

You've probably heard about the International Linear Collider (ILC). But what is it exactly? And how would Ichinoseki and the region change if it is built? Staff will chat about the ILC in a light and easy-to-understand way, and answer any questions you might have. Learn more about the ILC and think about Ichinoseki's future.



- ◇ Hope to see you there ~

【Enquiries】 Ms Chiba at the Department of Community Development, Ichinoseki City Office  
TEL 0191-21-8671 E-mail [machi@city.ichinoseki.iwate.jp](mailto:machi@city.ichinoseki.iwate.jp)